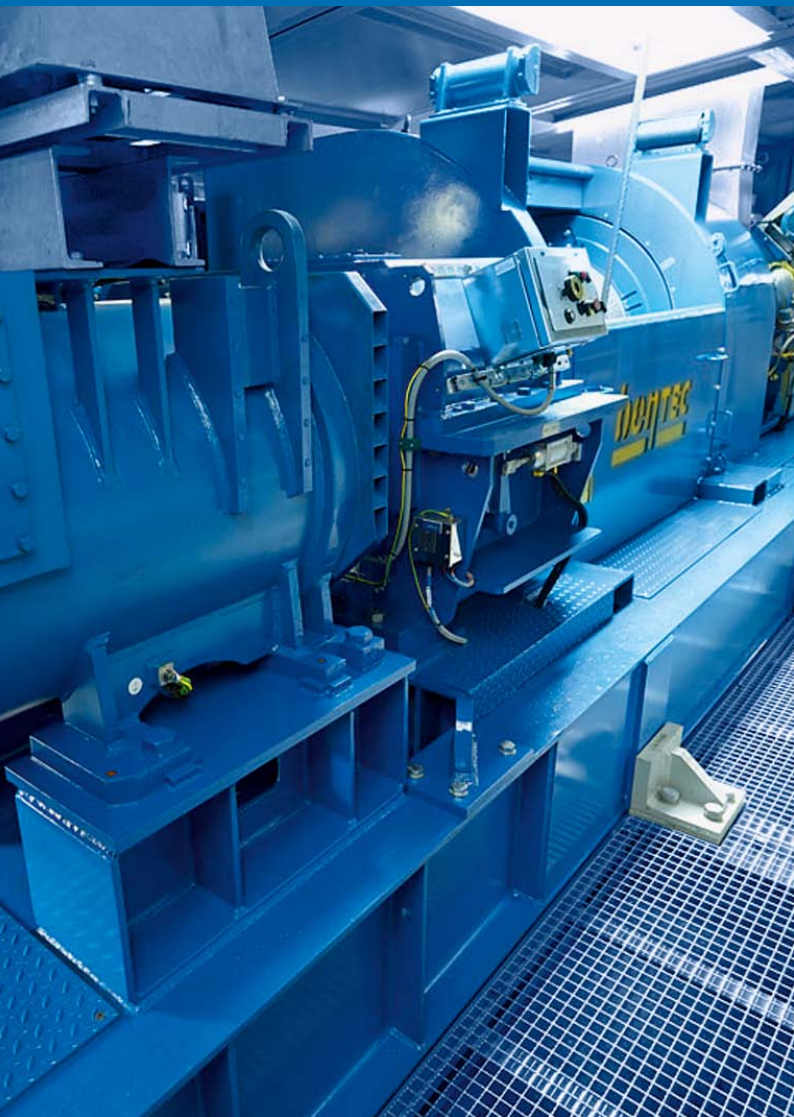


# GEAR-DRIVEN DRAWWORKS

Bentec GEAR-DRIVEN DRAWWORKS are modular, lightweight, small dimensioned, quiet, and easy to maintain.

## AVAILABLE CAPACITIES:

Two-Speed	Single Speed
1250 hp (AC & DC)	1000 hp (AC)
1500 hp (AC & DC)	1250 hp (AC)
2000 hp (AC & DC)	1500 hp (AC)
3000 hp (AC & DC)	2000 hp (AC)



## UNIQUE FEATURES

### TWO-SPEED DRAWWORKS

- air-cooled eddy current brake

### SINGLE-SPEED DRAWWORKS

- no eddy current brake
- single-speed gearbox for small footprint and reduced weight
- simplified modular design
- no cooling water required
- Feed off System enables auto driller function
- 4Q-mode in combination with Anti Collision System enables fastest tripping speeds
- suitable for onshore and offshore rigs
- arctic and desert design
- no hydraulics requires
- API, CE and ATEX conform

# TECHNICAL DATA

## GEAR-DRIVEN DRAWWORKS

The Bentec GEAR-DRIVEN DRAWWORKS were developed to provide the market with more reliable technology and more hoisting performance. Their light weight and small dimensions make them ideal for frequent rig moves or limited offshore crane capacity. Thanks to our decades of experience in designing and manufacturing drilling equipment, the Bentec GEAR-DRIVEN DRAWWORKS are equipped with modern in-house developed AC or DC motor technology.

Bentec also reduced the number of sensors to a feasible level. The Bentec GEAR-DRIVEN DRAWWORKS only need electrical power and air. No water or

hydraulics are necessary, which simplifies the Drawworks significantly. Bentec provides many Drawworks solutions to meet our customers' requirements for existing or newly built rigs.

All of these advantages make the Bentec GEAR-DRIVEN DRAWWORKS the best choice. Technically, a Drawworks is just a winch – but equipped with modern and reliable technology, it offers best performance.

### TECHNICAL DATA TWO-SPEED

Model:	E-1250-AC	E-1250-DC	E-1500-AC	E-1500-DC	E-2000-AC	E-2000-DC	E-3000-AC
Power rating in hp (kW):	1250 (920)	1250 (920)	1500 (1100)	1500 (1100)	2000 (1470)	2000 (1470)	3000 (2200)
Max. hook load:							
8 lines in lbs (t)	540 000 (245)	540 000 (245)	626 000 (284)	600 000 (272)			
10 lines in lbs (t)	668 000 (303)	668 000 (303)	776 000 (352)	740 000 (336)	926 000 (420)	840 000 (381)	
12 lines in lbs (t)			922 000 (418)	882 000 (400)	1 102 000 (500)	1 000 000 (453)	1 526 000 (692)
14 lines in lbs (t)					1 274 000 (578)	1 153 000 (523)	1 762 000 (799)
16 lines in lbs (t)							1 995 000 (904)
Wireline size in inches (mm):	1¼ (32)	1¼ (32)	1⅜ (35)	1⅜ (35)	1½ (38)	1½ (38)	1¾ (45)
Max. wireline speed in ft/s (m/s):	51.8 (15.8)	51.8 (15.8)	59 (18)	59 (18)	59.6 (18.2)	59 (18)	58 (17.7)
Hoisting drum size in inches (mm):	29½ x 67½ 750 x 1 716	29½ x 67½ (750 x 1 716)	33⅜ x 71¼ (846 x 1 824)	33⅜ x 71¼ (846 x 1 824)	33⅜ x 71¼ (846 x 1 824)	33⅜ x 71¼ (846 x 1 824)	39 x 71¼ (990 x 1 824)
Disc brake:	2-plate 48"	2-plate 48"	3-plate 48"	3-plate 48"	3-plate 48"	3-plate 48"	4-plate 60"
Electromagnetic brake:	EB-5032 Air cooled	EB-5032 Air cooled	EB-6032 Air cooled	EB-6032 Air cooled	EB-6032 Air cooled	EB-6032 Air cooled	EB-6032 Air cooled
Length in inches (mm):	283 (7 190)	286 (7 263)	305.3 (7 754)	307.7 (7 816)	306.5 (7 785)	301.2 (7 650)	338.6 (8 600)
Width in inches (mm):	117.5 (2 985)	117.5 (2 985)	117.5 (2 985)	117.5 (2 985)	117.5 (2 985)	117.5 (2 985)	125.5 (3 187)
Height in inches (mm):	96.5 (2 450)	99.4 (2 524)	98.9 (2 512)	114.9 (2 918)	115 (2 921)	108.3 (2 750)	114.9 (2 918)
Weight in lbs (t):	83 776 (38)	83 776 (38)	92 594 (42)	92 594 (42)	94 800 (43)	99 200 (45)	132 277 (60)

### TECHNICAL DATA SINGLE-SPEED

Model:	E-200-AC-SG	E-250-AC-SG	E-300-AC-SG	E-350-AC-SG	E-450-AC-SG
Power rating in hp (kW):	1000 (735)	1250 (920)	1250 (920)	1500 (1100)	2000 (1470)
Max. hook load:					
8 lines in lbs (t)	357 150 (162)	455 300 (202)	533 500 (242)	566 600 (257)	
10 lines in lbs (t)	440 925 (200)	551 000 (250)	661 400 (300)	701 100 (318)	831 100 (377)
12 lines in lbs (t)				833 400 (378)	1 000 900 (454)
14 lines in lbs (t)					1 155 200 (524)